

VEHICLE EXHAUST EXTRACTION



ASE/ASEM

Hose reels for exhaust fumes for worksites
with all types of stationary vehicles



MOVEX
PURE ADVANTAGE



Manual and motorized exhaust hose reels for worksites with all types of stationary vehicles

The ASE/ASEM hose reel is a practical solution for working with stationary vehicles. It helps to free up the work area from long hoses when the extractor is not being used. The ASE has a manual spring return, whilst the ASEM features a motorized return mechanism, ideal for high ceilings.

ASE/ASEM 65/85/125

ASE/ASEM 65/85/125 are equipped with a high quality, crush-resistant EPDM hose as standard and is available in Ø3/4/5/6" diameters.

ASE 65/85/125 come with one spring as standard, but can be equipped with an additional spring, if required. The recommended installation height for ASE 65/85/125 is generally 10-13 ft. ASEM 65/85/125 are the motorized versions. Motor operation is always recommended for installation heights above 10-13 ft in combination with hose lengths longer than 33 ft.

ASE/ASEM 130

ASE/ASEM 130 is designed to handle applications where there is a need for very high airflows. With a strong, high-quality EPDM hose (Ø8") and connector (Ø8"), the reel can handle airflows up to 1470 cfm.

The ASE 130 is equipped with dual springs to cope with the extra weight from the larger hose dimensions, whilst the ASEM 130 has dual motors to cope with the increased hose weight.

The additional power for hose retraction provides freedom of choice when it comes to the installation height and allows for a greater working radius; since the heavier weight of the hose itself does not affect the operation of the hose reel.

Nozzles

A wide range of exhaust nozzles are available as accessories for ASE/ASEM. The separate product sheet for the exhaust nozzles contains information on which nozzles are suitable for different applications.

Energy saving & accessories

By complementing your system with automatic control in the form of, for example, automatic dampers and frequency converters, you can:

- optimize energy consumption
- lower noise levels
- extend the service life of the system.

Information on automatic control units can be found in the separate product sheet titled Automatic Control Units for Vehicle Exhausts.

Accessories include automatic mechanical dampers, electric damper control, dual spring set, and controllers for motorized hose reels (ASEM). All models can be equipped with special hoses, such as hoses with higher temperature resistance.

Movex's hose reels allow the length and dimensions of the hose to be adapted to the needs of the worksite and according to the planned installation height.

Wide range

The hose reels are available in four models: ASE/ASEM 65, 85, 125, and 130. All reels have a light-weight aluminum/sheet metal design which allows for easy installation on ceilings, walls or floors.



Model selection

ASE (Manual return)	ASEM (Motorized return)	Hose			
		Type	Ø (in)	Length (ft)	Free hanging (ft)
Hose dimension Ø3"					
ASE 65-75/5	ASEM 65-75/5	AG	3"	17	-
ASE 65-75/7.5	ASEM 65-75/7.5	AG	3"	25	-
ASE 65-75/10	ASEM 65-75/10	AG	3"	33	-
Hose dimension Ø4"					
ASE 65-100/5	ASEM 65-100/5	AG	4"	17	-
ASE 65-100/7.5	ASEM 65-100/7.5	AG	4"	25	-
ASE 65-100/10	ASEM 65-100/10	AG	4"	33	7
ASE 85/100/10	ASEM 85/100/10	AG	4"	33	-
Hose dimension Ø5"					
ASE 65-125/5	ASEM 65-125/5	AG	5"	17	-
ASE 65-125/7.5	ASEM 65-125/7.5	AG	5"	25	-
ASE 85-125/10	ASEM 85-125/10	AG	5"	33	-
ASE 85-125/12.5	ASEM 85-125/12.5	AG	5"	41	4
ASE 125-125/15	ASEM 125-125/15	AG	5"	49	-
Hose dimension Ø6"					
ASE 65-150/5	ASEM 65-150/5	AG	6"	17	-
ASE 85-150/7.5	ASEM 85-150/7.5	AG	6"	25	-
ASE 85-150/10	ASEM 85-150/10	AG	6"	33	5
ASE 125-150/10	ASEM 125-150/10	AG	6"	33	-
ASE 125-150/12.5*	ASEM 125-150/12.5	AG	6"	41	-
ASE 125-150/15*	ASEM 125-150/15	AG	6"	49	5
Hose dimension Ø8"					
ASE 130-200/10*	ASEM 130-200/10	AGX	8"	33	-
ASE 130-200/12.5*	ASEM 130-200/12.5	AGX	8"	41	5
ASE 130-200/15*	ASEM 130-200/15	AGX	8"	49	13

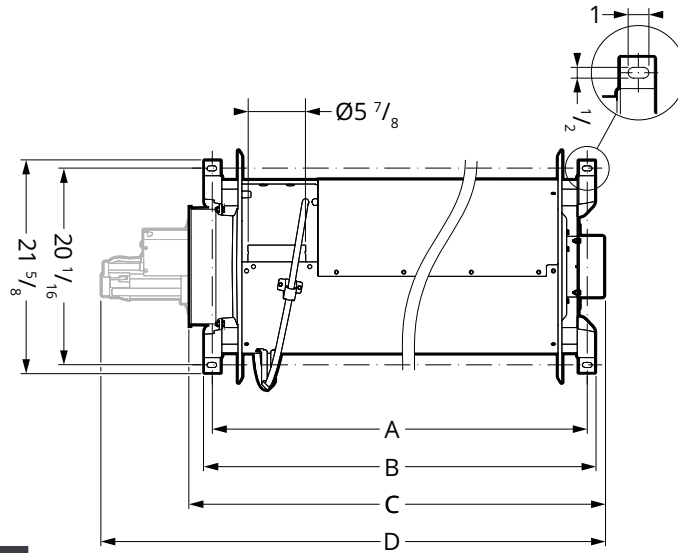
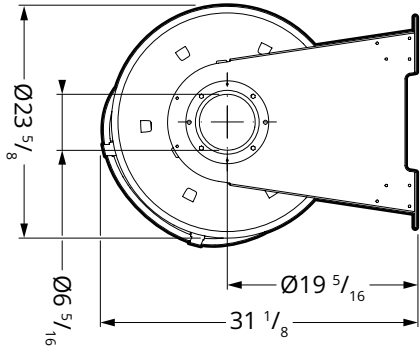
Recommended installation height for ASE 65/85/125 is 10-13 feet.

* Dual springs included.

This feature is available when using an original Movex hose and Movex nozzle with a maximum weight of 6 lb.

Dimension diagrams (in)

ASE/ASEM 65/85/125

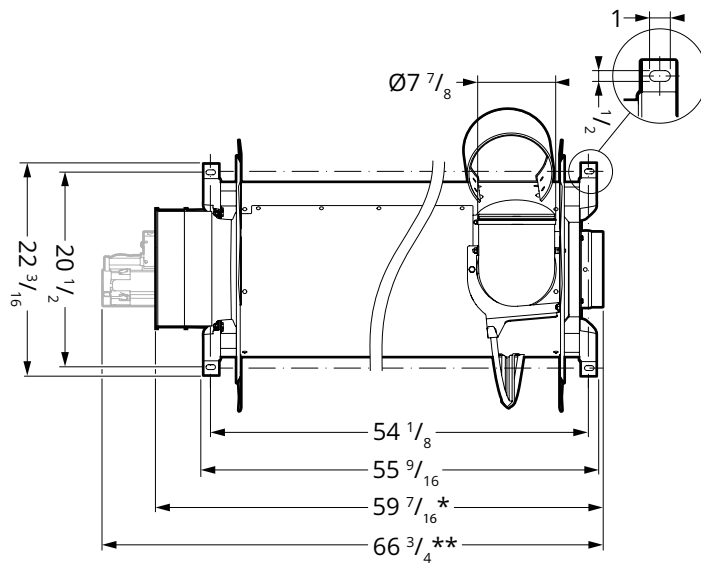
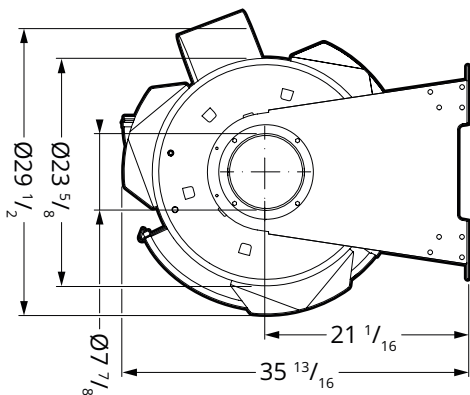


Article	Dimensions (in)			
	A	B	C*	D**
ASE/ASEM 65	30 1/2	31 15/16	33 5/8	43 3/8
ASE/ASEM 85	38 3/8	39 13/16	41 1/2	51 1/4
ASE/ASEM 125	54 1/8	55 9/16	57 1/4	67

* Specified dimensions only apply to ASE (spring).

** Specified dimensions only apply to ASEM (motor).

ASE/ASEM 130

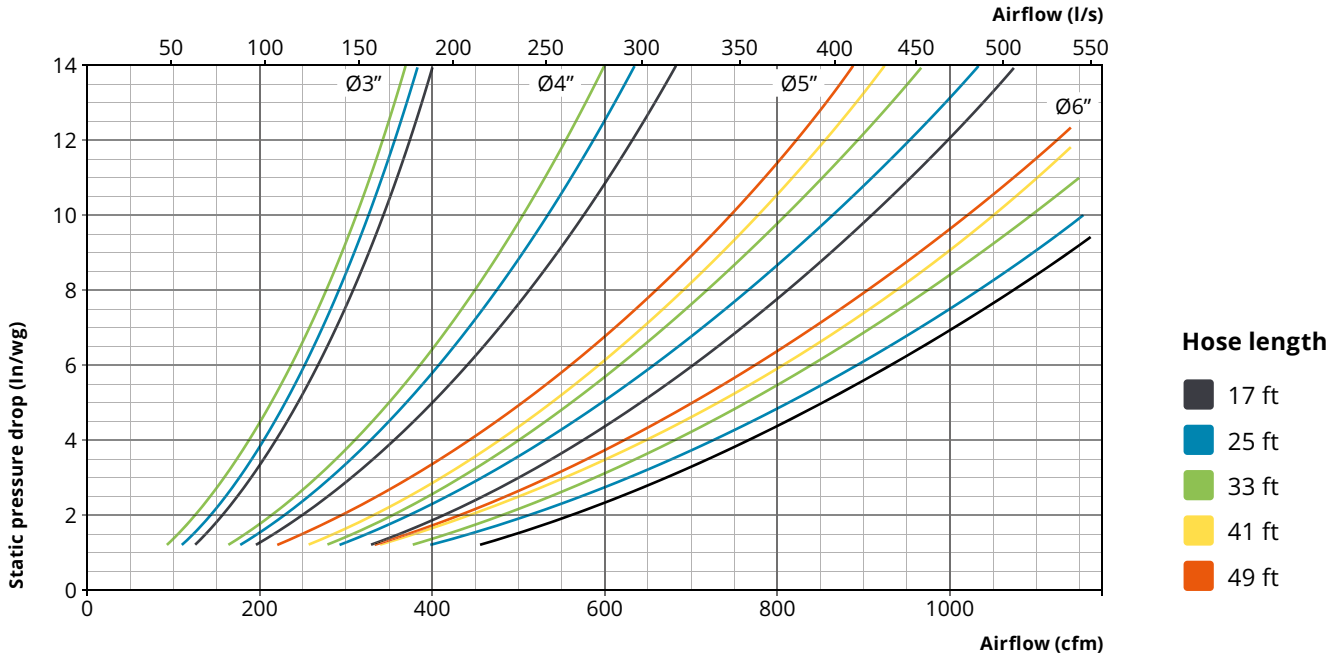


* Specified dimensions only apply to ASE (spring).

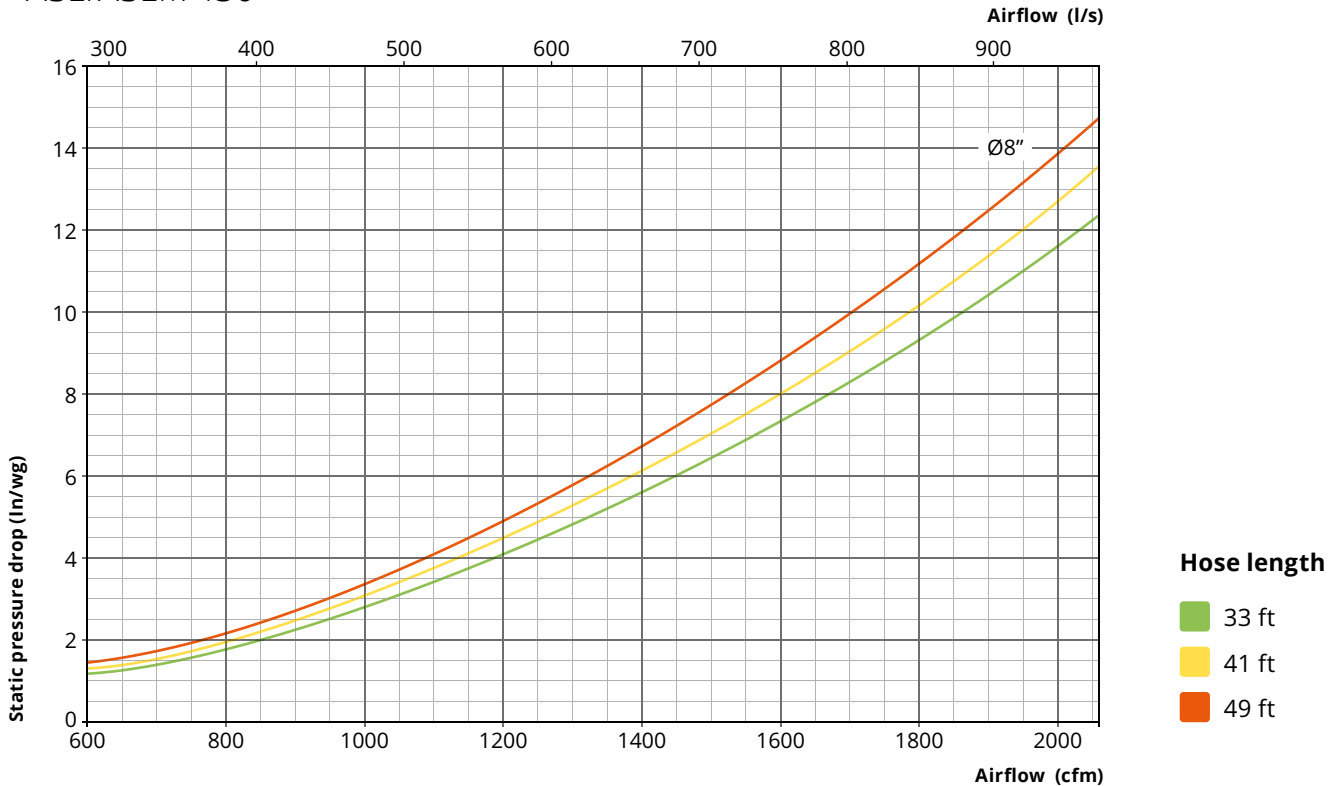
** Specified dimensions only apply to ASEM (motor).

Pressure drop (fully extended hose)

ASE/ASEM 65/85/125



ASE/ASEM 130



Accessories

ASEF - Bracket kit for mounting fan on hose reel

Kit consisting of bracket and relevant mounting parts. Made for fans FBE 076/156. Available in three different designs depending on the exhaust direction (LG 0/90/270). Mounted directly on the hose reel. For fan control, see accessories in separate product sheet for fan FBE.

Fits: ASE/ASEM 65/85/125

ASE 865 - Switch for controlling fans/electric dampers

Externally mounted. Activated by the rotation of the hose reel. Automatic start/stop of fan and electric damper. Max 24 V supply voltage. For a complete system, the Movex S 600/S 400 control unit must be used (refer to the separate product sheet Automatic Control Units for Vehicle Exhausts).

Fits: ASE/ASEM

ASES - Automatic mechanical damper

For fitting to the connection sleeve. Activated by the rotation of the hose reel. The damper has a clear indicator, which shows whether the damper is open or closed. ASES is an energy saving accessory. Combine with fan pressure control to further optimize the system.

Fits: ASES 160 - ASE 65/85/125
ASES 200 - ASE 130

ASED - Extra spring set for manual hose reel

For fitting to the exterior of an standard spring when additional lifting power is required, e.g. for long hoses, heavier hoses/nozzles, and high mounting heights. Supplied fully equipped with drive shaft. Weight: 17 lb

Fits: ASE 65/85/125

ASL

8 inch hose with hose clamps for connecting the hose reel and duct.

Fits: ASL 160 - ASE 65/85/125
ASL 200 - ASE 130

AMRE

Mounting frame for ASE/ASEM.

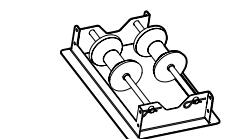
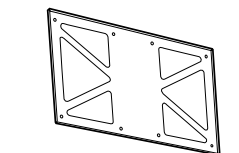
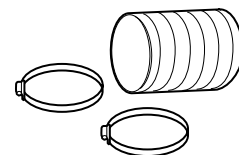
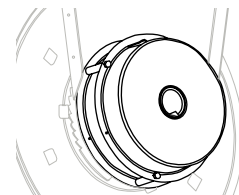
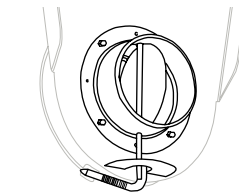
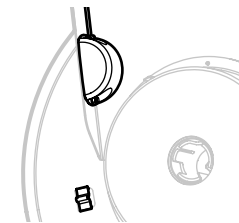
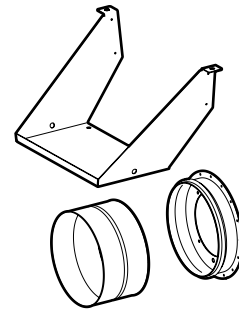
Fits: AMRE 65 - ASE/ASEM 65
AMRE 85 - ASE/ASEM 85
AMRE 125 - ASE/ASEM 125

AGR

Ceiling frame for hose entry.

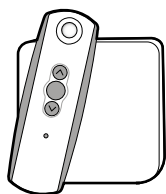
Fits: AGR-100 - Hose dimension $\varnothing 4''$
AGR-125 - Hose dimension $\varnothing 5''$

Outer dimensions $22 \frac{1}{16} \times 15 \frac{3}{8}''$ **Hole dimensions** $21 \frac{7}{16} \times 12 \frac{3}{8}''$

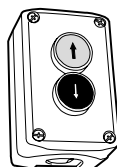


Controllers (ASEM)

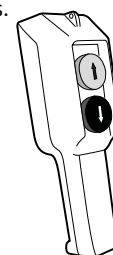
Used to reel the hose in and out easily and conveniently, while helping to prevent work-related injuries.



ASEM RADIO
Radio control set
(transmitter/receiver)
IP 55.



ASEM 1
Wall-mounted
controller
IP 66.



ASEM 2
Hanging
controller
IP 65.

ASB

Swivel arm for hose reel. Complete including mounting kit, hose- and duct details.

ASB 1960

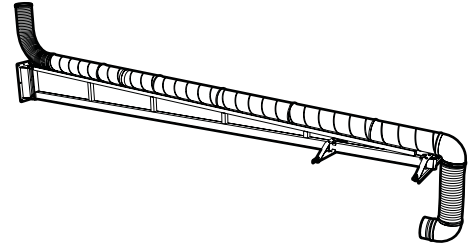
Length:..... 6 ft
Weight:..... 97 lb

ASB 4300

Length:..... 14 ft
Weight: 154 lb

ASB 6300

Length:21 ft
Weight:.....198 lb



Specifications

Form of delivery

ASE/ASEM 65/85/125 Complete with hose type AG.
ASE/ASEM 130 Complete with hose type AGX.

Surface finishing

Sheet metal Powder-coated
Aluminum Anodized

Hose type AG (ASE/ASEM 65/85/125)

EPDM with polyester coil, crush resistant,
temperature range -22 °F – 338 °F.

Hose type AGX (ASE/ASEM 130)

EPDM with 1/16" steel coil,
temperature range -22 °F – 338 °F.

Motor (ASEM)

	ASEM 65/85/125	ASEM 130
Voltage:	1-phase 120 V	1-phase 120 V
Rated current:	3.3 A	6.6 A
Rated power:	0.52 hp	1.06 hp
Torque:	855 IN LBS	1770 IN LBS
Lifting force:	66 lb	132 lb
Enclosure:	IPX4	IPX4

Weight excluding hose (lb)

	65	85	125	130
ASE	77	81	88	125
ASEM	88	95	99	121

Recommended installation height

ASE/ASEM 65/85/125

Recommended installation height for ASE/ASEM 65/85/125 is 10-13 ft. For higher installation, an extra spring may be required. Motor operation is always recommended for installation at heights above 10-13 ft in combination with hose lengths longer than 33 ft.

ASE/ASEM 130

ASE/ASEM 130 is equipped with dual spring or a more powerful motor, which allows for a greater working radius and freedom of choice when it comes to the installation height, since the heavier weight of the hose itself does not affect the spring-loading of the hose reel during retraction.

Recommended airflow rate for extraction in vehicle workshops

This recommendation applies to low motor speed and load.

Activity	cfm
Passenger cars	235
Trucks	590

Additional information

For information on nozzles and automatic control units, refer to the separate product sheets.

EXTRACTION ARMS · VEHICLE EXHAUST EXTRACTION · FANS · FILTERS · CURTAINS · CONTROLS

MOVEX

104 Commerce Drive, Northampton, PA 18067, USA • Tel: 610-440-0478 • Fax: 610-440-0480 • Email: info@movexinc.com

www.movexinc.com